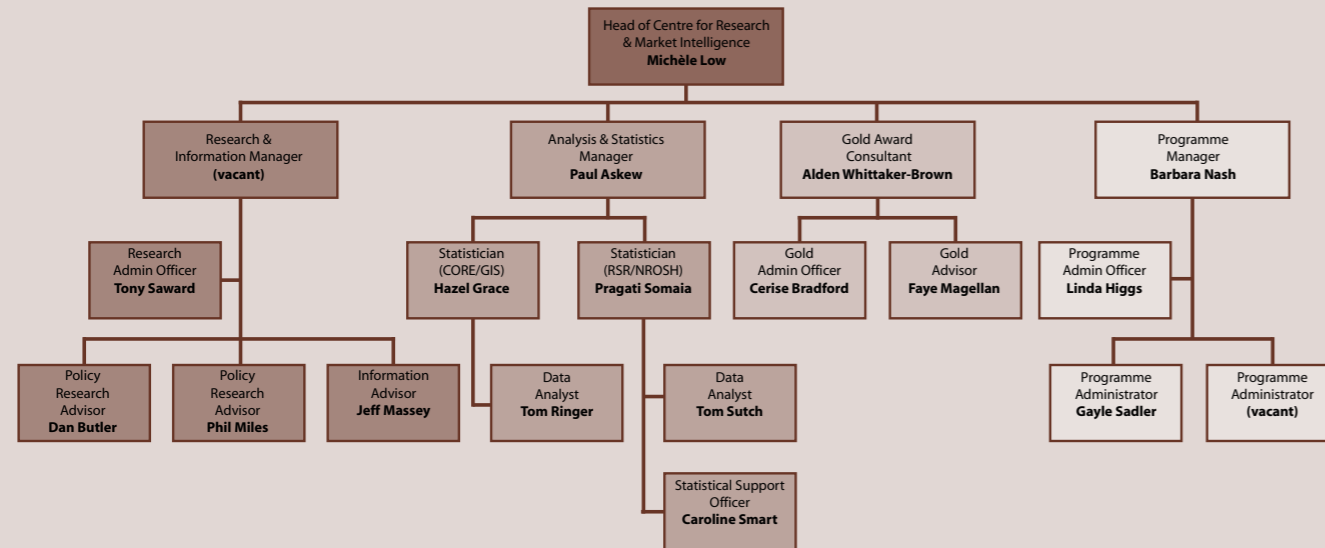


Centre for Research and Market Intelligence

Knowledge, innovation and excellence

Who we are



Contact us

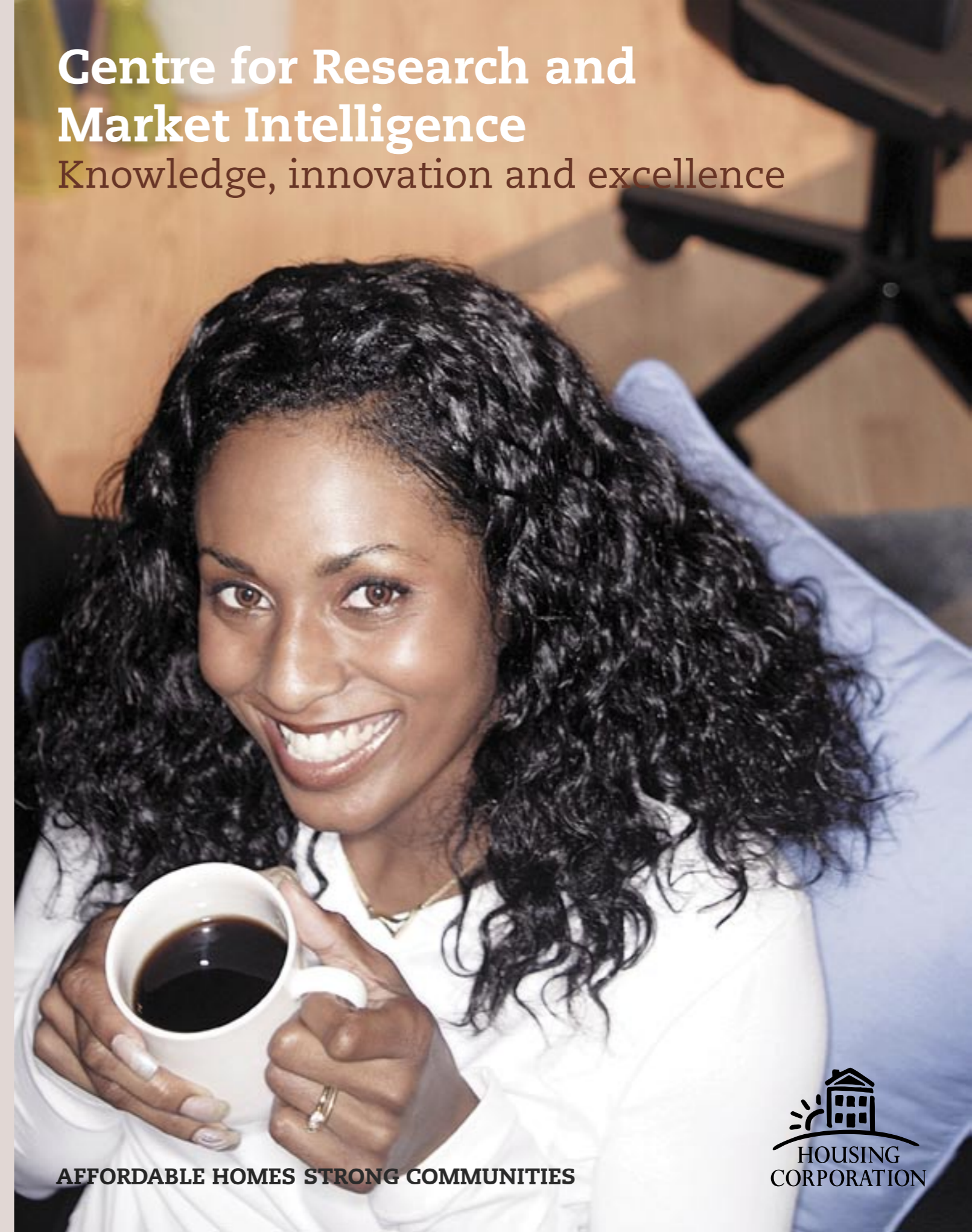
Centre for Research and Market Intelligence
Housing Corporation
Block 1, Suite 1
Westbrook Centre
Milton Road
Cambridge CB4 1YG
UK

Tel: 0845 230 7000
Fax: 01223 272531
E-mail: crmi@housingcorp.gsx.gov.uk
Internet: www.housingcorp.gov.uk

For further copies of this publication please call 0845 230 7000 or e-mail enquiries@housingcorp.gsx.gov.uk.

We can provide versions in large print, Braille and audio cassette, on request. Other language versions may also be available.

October 2006



AFFORDABLE HOMES STRONG COMMUNITIES



Welcome to CRMI



The Centre for Research and Market Intelligence (CRMI) was created in 2006 to bring together the Housing Corporation's research, data analysis, tenant empowerment and good practice schemes – including the new

Gold Award for Excellence – into one place. By doing this we're maximising our research and analysis potential. We are able to analyse housing information in ways and on a scale we've not been able to before. The results will change literally millions of people's lives.

CRMI's vision is to be the centre of expertise for housing policy and information. Our aim is to make the wealth of information and data we hold accessible to all, and to be at the leading edge of new, developing thinking for the benefit of the housing community. We want to empower people to know what questions to ask, and to have the answers to those questions.

In this brochure you will find a short introduction to CRMI: what we are currently working on, who we are and how you can contact us. We rely on close relationships with stakeholders to ensure that our work is timely and addresses the right issues. So if you are interested, I encourage you to get in touch.

Michèle Low
Head of the Centre for Research and Market Intelligence

What we do

CRMI aims to have the most up-to-date knowledge base and information management service in the housing sector. We are already leading the way in developing new statistical tools and systems, and we will continue to work to maintain a position at the forefront of new ideas and developments in the housing environment.

Current areas of focus

Gold Award for Excellence

After the success of the Gold Award's first round, entries were invited for 2007. In 2006, over 70 social landlords entered and 12 together won five £50,000 prizes to help disseminate their excellent practice in tackling homelessness and innovation in procurement. More entries are expected this year. The themes for 2007 are:

- environmental sustainability; and
- empowering communities.

See our website for further details.



Housing and Planning Minister Yvette Cooper with the winners of the 2006 Gold Awards for Excellence and the chair of the judging panel

Innovation and good practice

The Housing Corporation is committed to developing an outstanding innovation and good practice (IGP) programme. Since 1995, the Housing Corporation has invested over £75 million through its IGP programme, funding a range of pioneering projects which have developed innovative solutions and promoted good practice within the affordable housing sector. The 2007-09 IGP bidding round has been launched and interested organisations are encouraged to put forward proposals for new IGP projects. We are really keen to support new, innovative schemes that can be shared and that will help overcome the challenges facing the housing sector. See our website for further details.

Housing data and National Register of Social Housing

At CRMI we collect and manage the Housing Corporation's regulatory data, such as the annual Regulatory and Statistical Return (RSR) and the COntinuous REcording of Lettings and Sales (CORE). We are also developing a new data source, the National Register of Social Housing (NROSH), in partnership with the Department for Communities and Local Government. NROSH will become the property database containing detailed information on each unit of social housing in England, and the aim is for it to replace the RSR in due course.

Research projects

CRMI undertakes a wide range of research projects to drive forward thinking in housing research. Our current flagship research project, Economic, Spatial and Demographic Impacts on Future Affordable Housing Demand, which includes research outputs on the aspirations of social housing tenants, will publish its results in autumn 2007. CRMI has also commissioned Sector Studies which address issues such as housing associations' use of anti-social behaviour powers and the characteristics of rural tenants.

About the Housing Corporation

- The Housing Corporation is a government agency created in 1964 to promote voluntary, non-profit making housing associations and co-operatives. We invest in new affordable housing programmes, regulate housing associations and influence housing, community and regeneration policy. In 2004, our powers were extended to enable us to fund unregistered organisations, such as private developers and others;
- Since 1988, the Housing Corporation has invested £20 billion of public investment to help fund 585,000 new affordable homes;
- With our combination of investment and regulation, we have attracted £25 billion of private finance into the sector over the last 15 years; and
- We are working with our development partners to ensure that homes delivered in our 2006-08 investment programme meet the EcoHomes 'very good' standard, and at least 25% are delivered using modern methods of construction.

"We're working with the Housing Corporation and other partners to make sure that cutting-edge ideas turn into real places where people want to live"

Peter Maxwell, Commission for Architecture and the Built Environment

"The range and imagination of projects supported by the Housing Corporation is astonishing. I hope they will inspire more organisations to push the boundaries, to help ensure that what is innovative today becomes mainstream tomorrow"

Janis Bright, housing journalist